

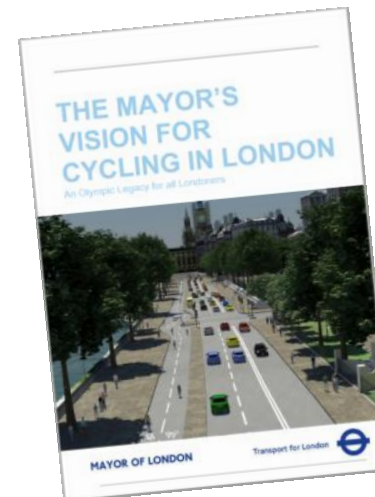
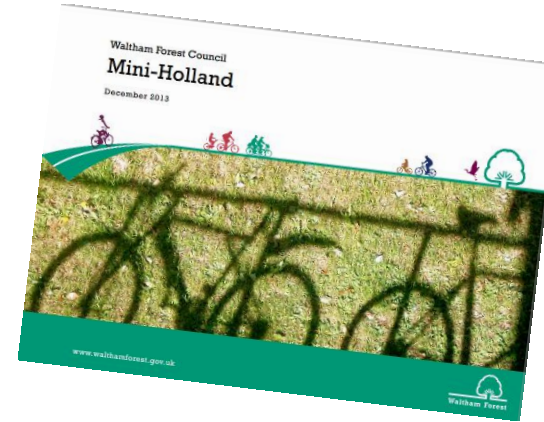
# Enjoy Waltham Forest

Jon Little



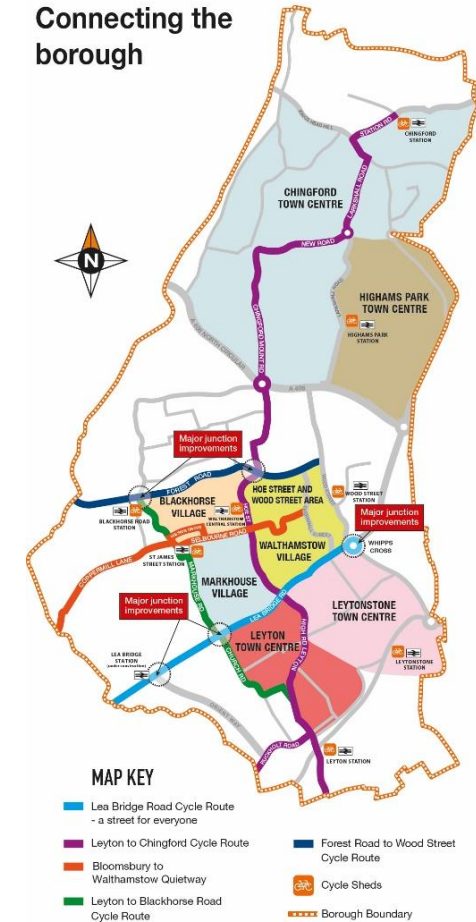
# Waltham Forest Mini-Holland

- Part of the Mayors Transport Strategy
- Competition open to all outer London boroughs
- Scope of bid was to include:
  - A world class commuter route
  - A Main Town Centre
  - Secondary Centres
  - A Network of Excellent Cycle Routes
  - Complementary Measures



## A NETWORK OF WALKING AND CYCLING ROUTES

Connecting the borough



# Why Waltham Forest?

- An existing car dependent culture and a growing population
- We can redesign streets so there is space for everyone
- World class cycling and walking links from all parts of the borough to work, education, recreation, nature
- We need more people cycling, walking and using public transport



Frederick Bremer, Walthamstow



John Kemp Starley, Coventry



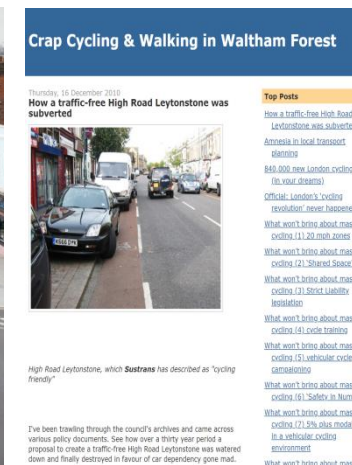
Boris Johnson, London



Jon Edie and Otis, Leyton

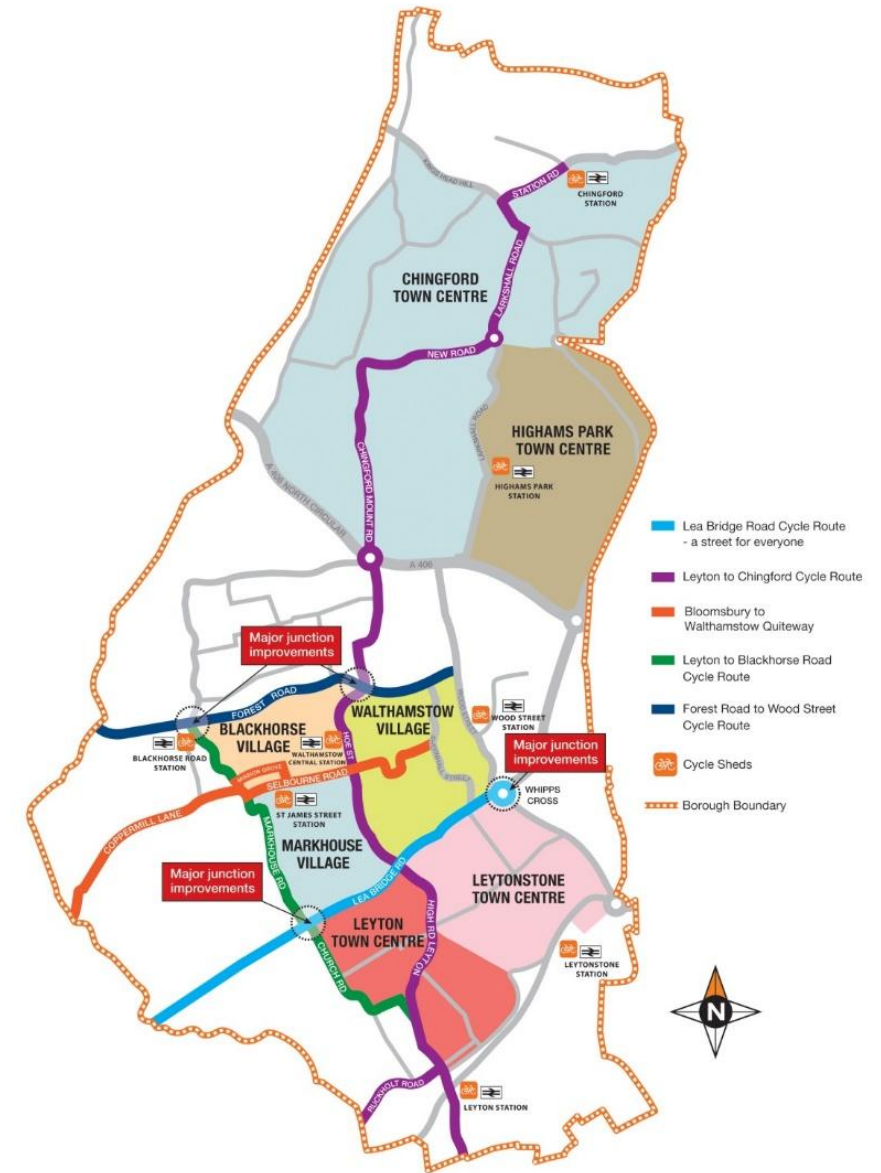
# Why Waltham Forest?

- Encouraging people from all communities to walk and cycle more, reducing reliance on private vehicles
- Making our streets better places to be for everyone
- Healthier streets- reducing pollution and encouraging healthy, active lifestyles
- Supporting the growth and development of the borough in a sustainable way



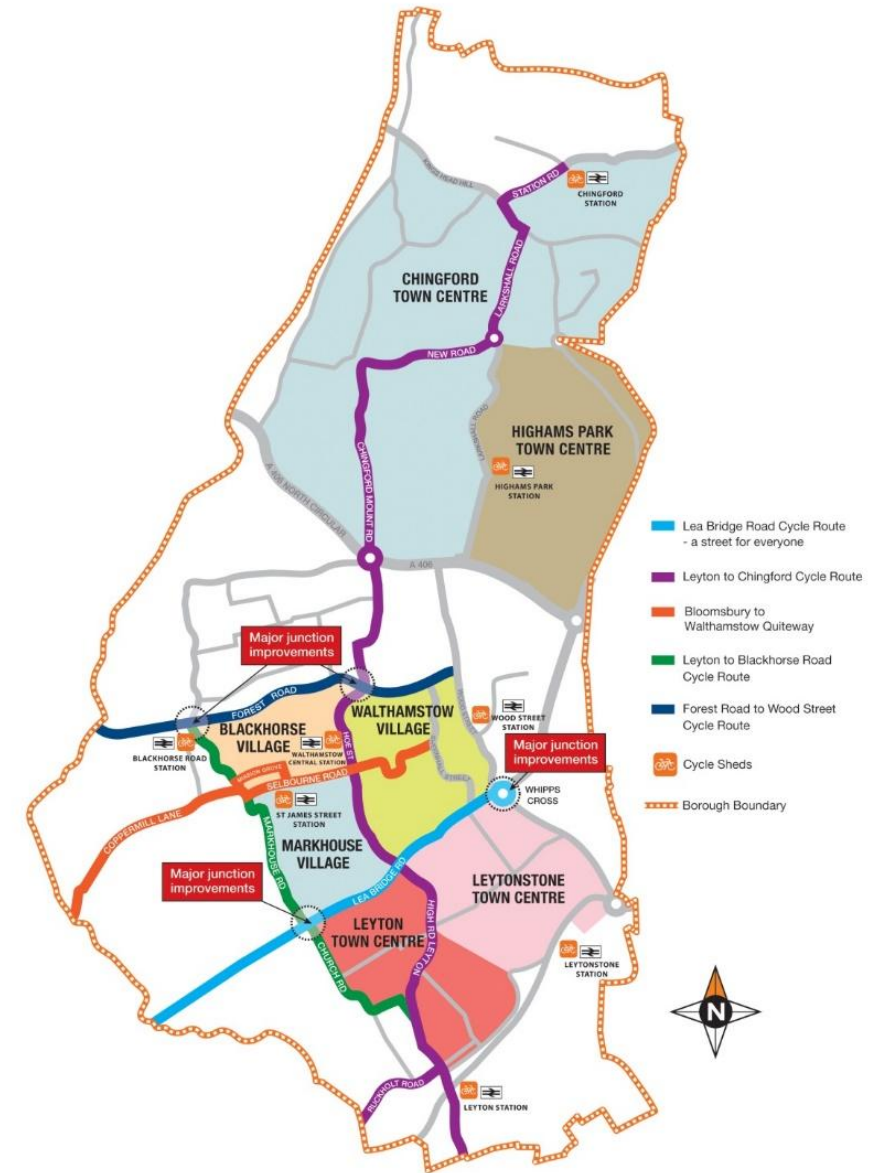
# Network of routes

- Forest Road - Commuter route linking north Walthamstow to Tottenham Hale
- Leyton to Blackhorse Road - Links areas of new development in Blackhorse Road, Leyton and onto Stratford
- Leyton to Chingford - Spine route linking north of borough with Leyton via central Walthamstow and villages
- Quietway 2 - Bloomsbury to Walthamstow via Hackney
- Lea Bridge Road Flagship commuter route through centre of borough to Hackney/Redbridge

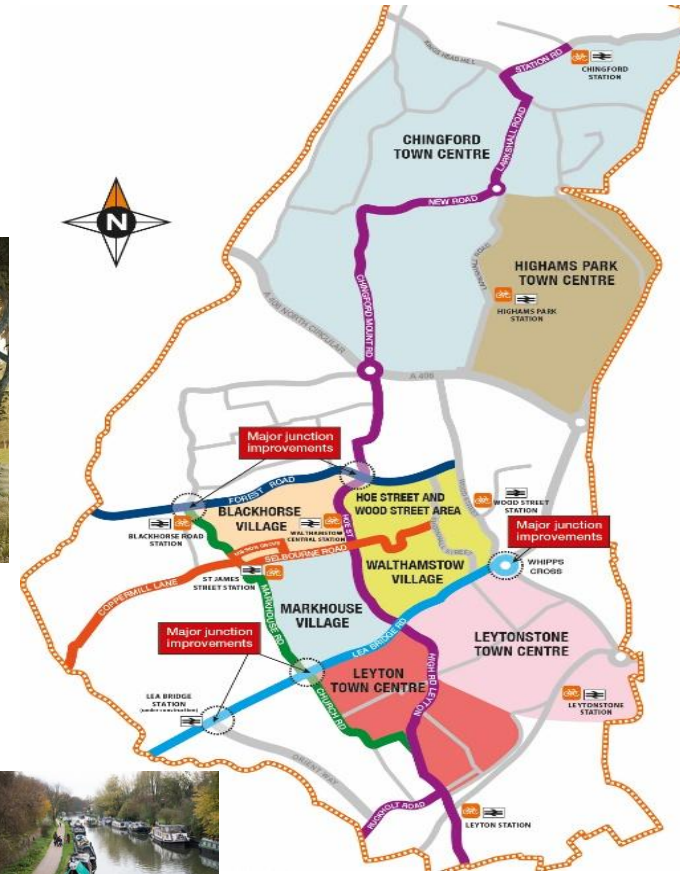


# Network of routes

- Continuous joined up network
- Doesn't give up at the difficult places
- Links villages and town centres together for longer journeys
- Direct links into the wider London cycling network with continuous segregated journeys possible from Waltham Forest into central London
- Connects the key destinations in the borough and those nearby

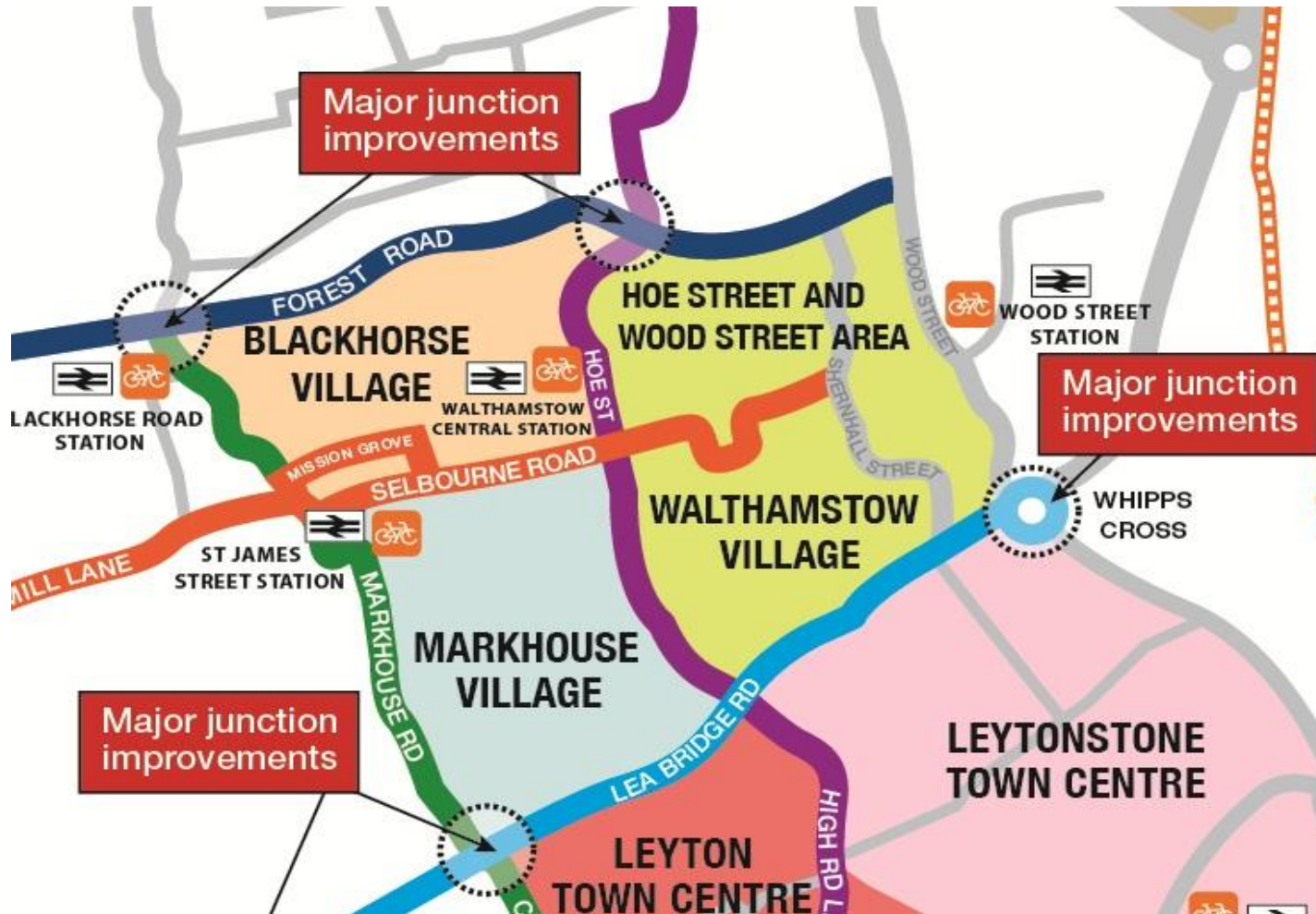


# Network of routes



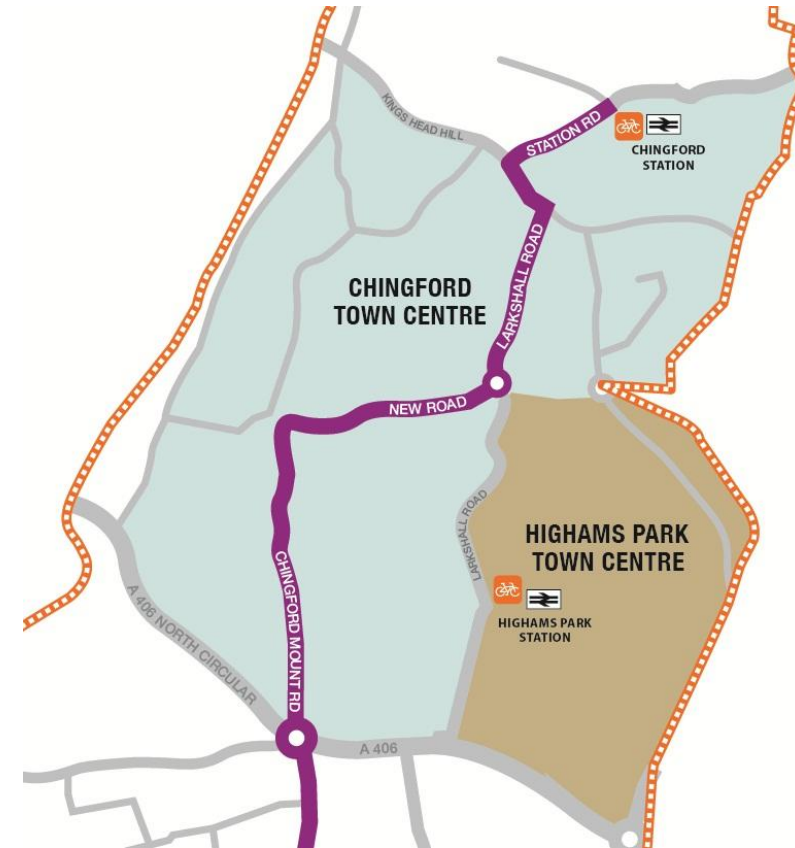
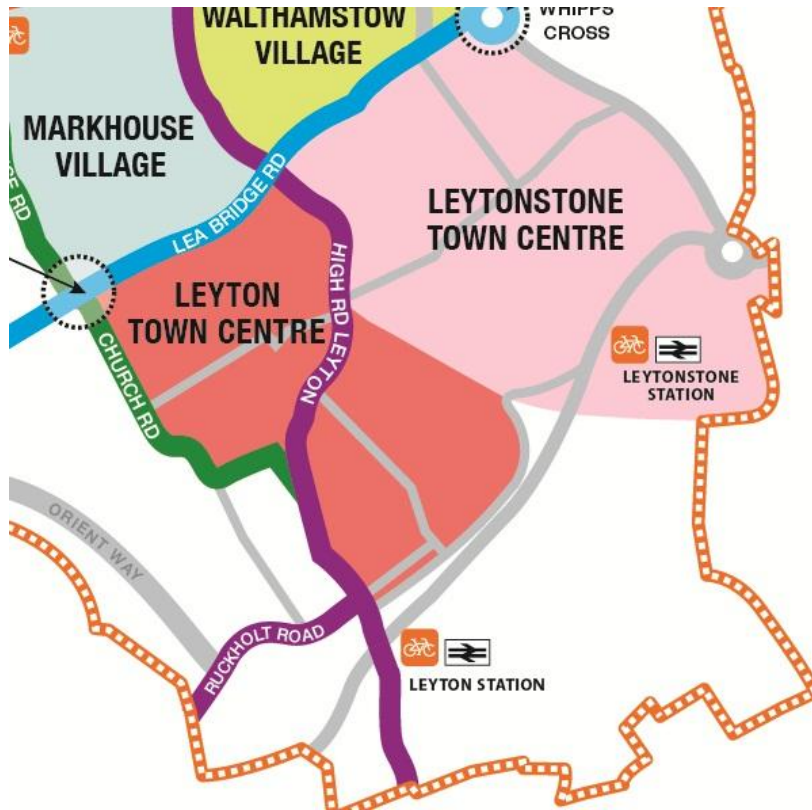
# The Villages

Walthamstow Village, Markhouse Village, Blackhorse Village and Hoe Street/Wood Street



# The Town Centres

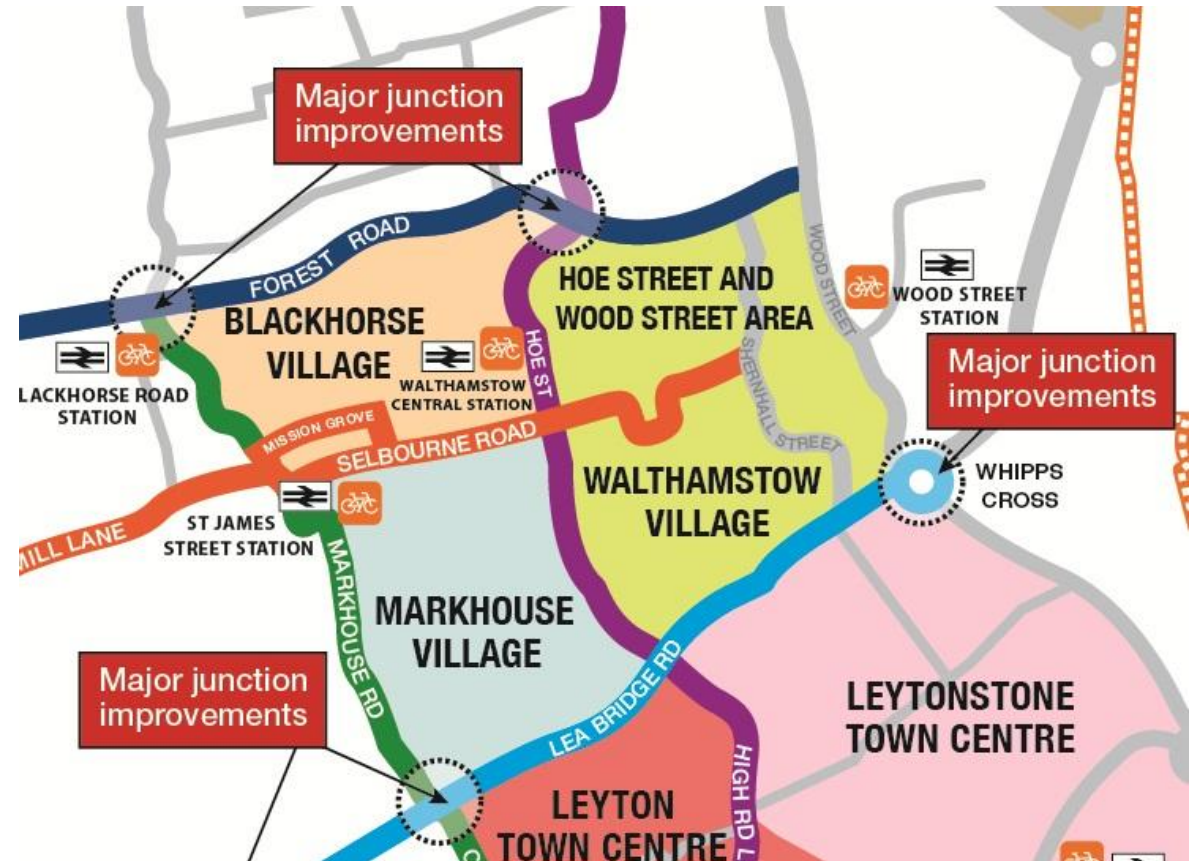
Chingford, Highams Park, Leyton, Leytonstone



# The Villages

Walthamstow Village, Markhouse Village , Blackhorse Village and Hoe Street/Wood Street

- A cycling (and walking) grid with mesh of  $\leq 400\text{m}$
- A local network that is resilient to changes in traffic conditions on main roads
- Wayfinding for short and long journeys
- Direct access into the town centre
- Multiple points of entry to our network of cycle routes
- Cycle parking- hubs, stands and residential lockers



# The Villages

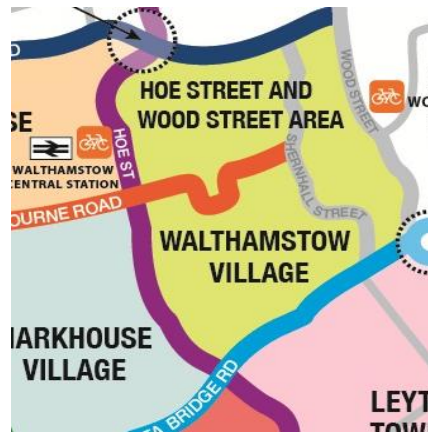
Walthamstow Village, Markhouse Village , Blackhorse Village and Hoe Street/Wood Street

- Distinct urban villages with their own identities that are great places to walk and cycle
- Quiet green areas free of through traffic
- New public spaces
- New places for informal socialising play
- Get to know your neighbours



# The Villages

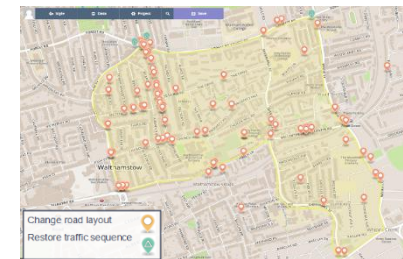
Walthamstow Village local connections





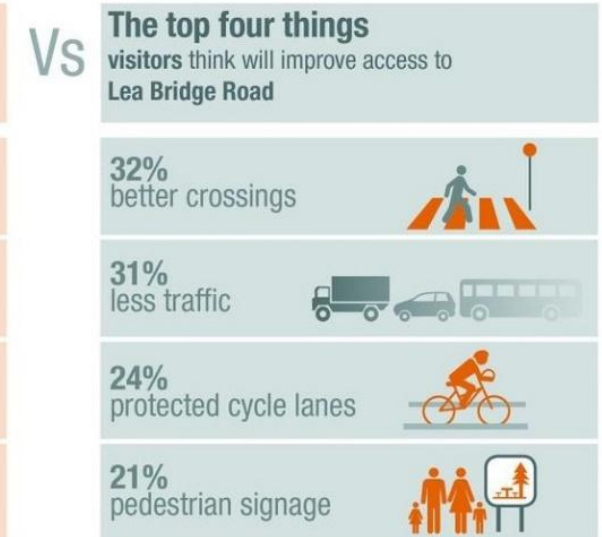
# Project principles

- Public involvement in design development vital to project success
- Co-design is a central theme
- Important that community feel ownership and empowerment
- Knowledge is power that needs to be shared
- Open, transparent and accountable

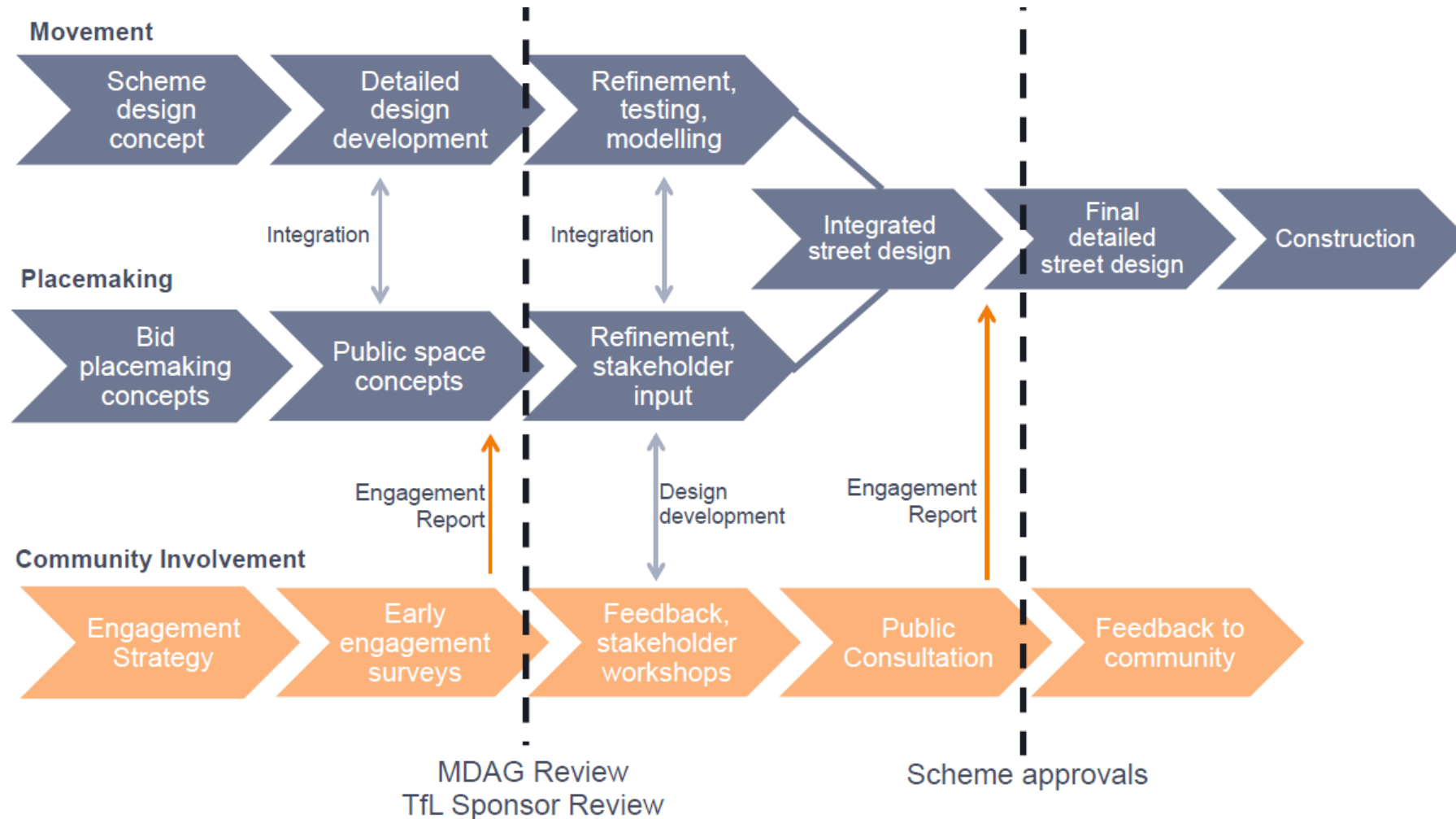


# Project process

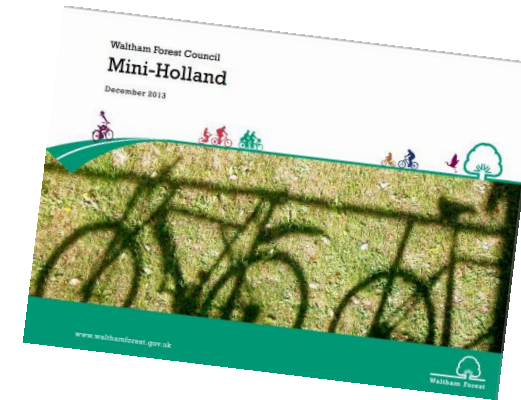
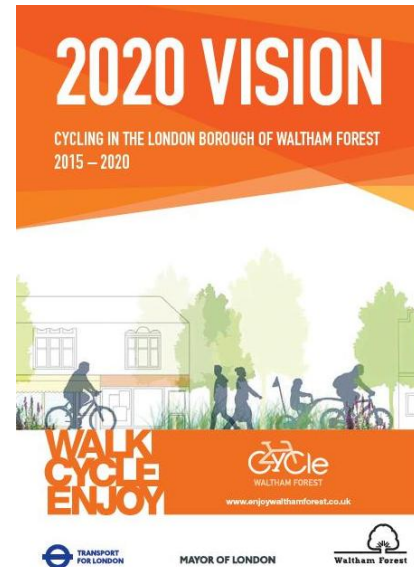
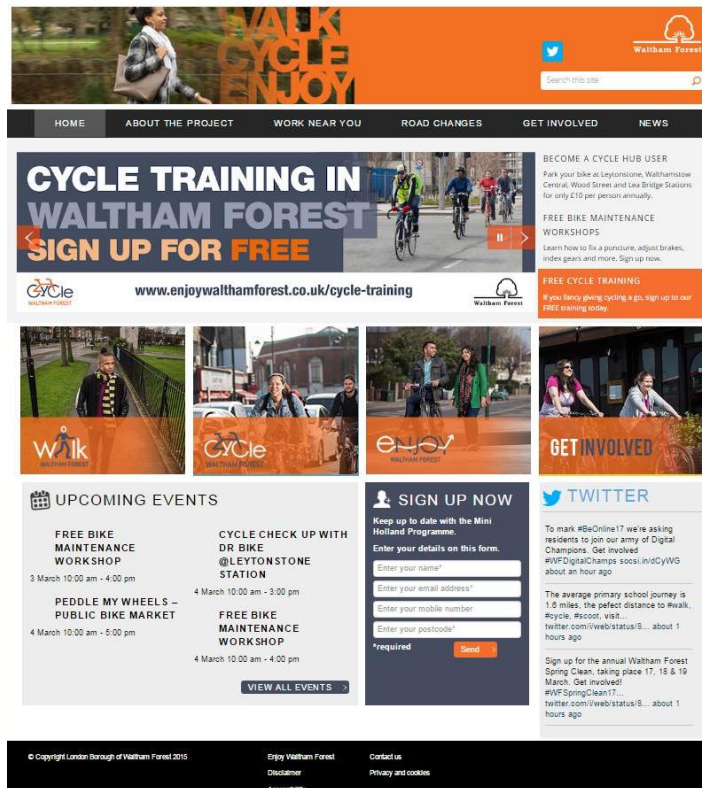
- Local early engagement- ward forums, resident group meetings etc.
- Perception Survey
- Co-design workshop
- Public consultation inc. drop-ins sessions, walking audits
- Reporting process
- Statutory consultation
- Implementation



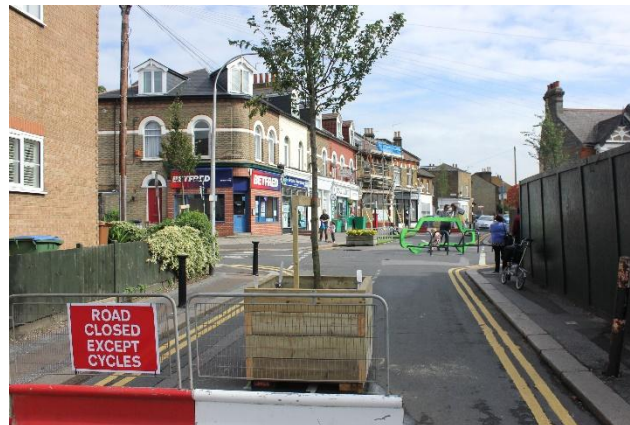
# Design process



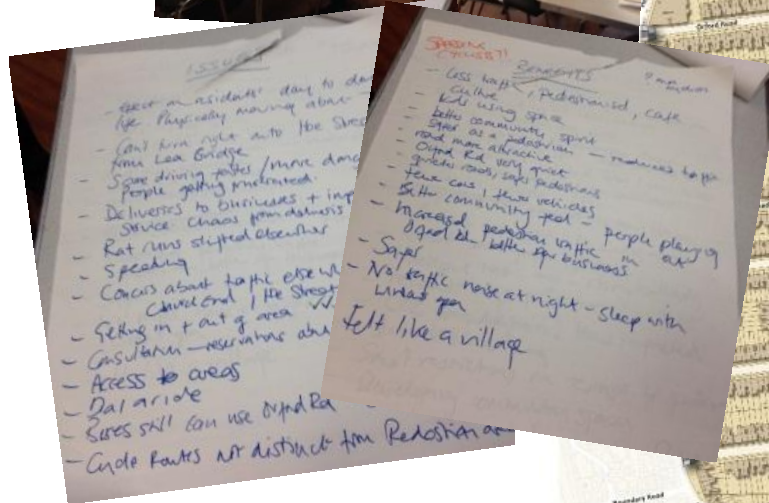
# Resources and documentation



# Walthamstow Village trial

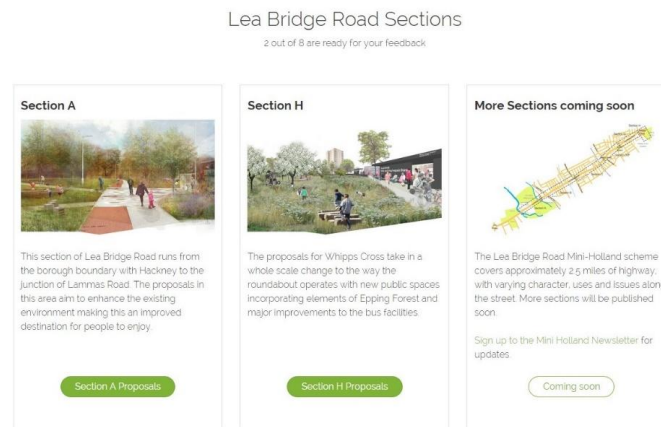


# Walthamstow Village trial



# Engagement

- Used on-line platform (website and consultation tool commonplace)
- It enables us to tell the entire project story
- Able to run multiple engagement/consultations at different stages at any one time
- We can provide much more detail and background for respondents



# What's the reaction been?



# What's the reaction been?



# Outcomes



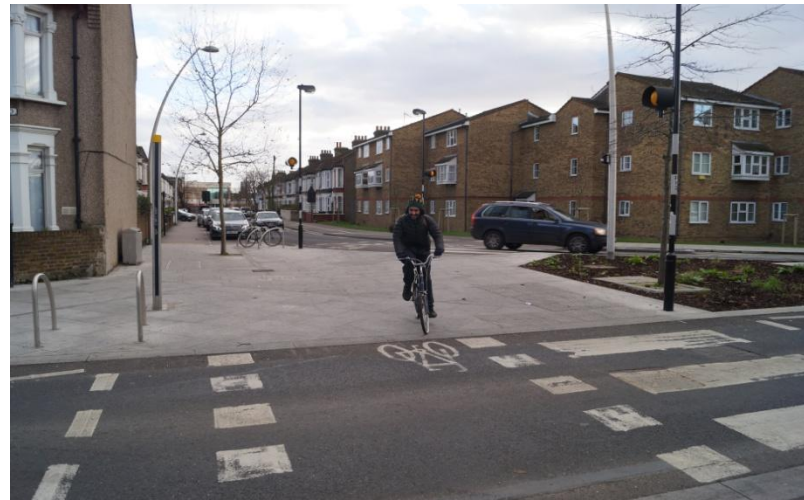
# Outcomes



# Outcomes



# Outcomes



# Outcomes



# Outcomes



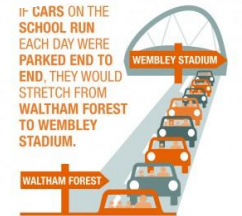
# Outcomes



# Complementary measures



# Complementary measures



Waltham Forest events | 10/07/2017 - 10/07/2017  
Cycling and play area at our Mini-Holland site at Leyton Jubilee Park today. Visit: mini-holland.co.uk

**NO ORDINARY BICYCLE: JOHN KEMP STARLEY AND THE TWO-WHEELED REVOLUTION**

30 August 2017 -

**New exhibition in Waltham Forest**

John Kemp Starley (1855 – 1901), born in Walthamstow, played a key role in the development of the modern bicycle. Starley's modifications to the 'safety' bicycle enabled more people than ever before to access this form of transport, leading to the 'bicycle craze' of the late 19th century. The exhibition explores Starley's developments, still reflected in bicycles today, and celebrates his legacy in terms of the bicycle's unimagined social impact on health, social mobility and sustainability throughout the decades both here and abroad.

**When**  
Saturday 9 September 2017 - Sunday 25 February 2018  
All day

**Where**  
Vestry House Museum

**Cost**  
Free

[Twitter](#) [Like 0](#) [G+](#) [Print](#)

**EVENTS**

**OPEN SPACES RIDE - 2ND SUNDAY EVERY MONTH**  
13 May 1:00 pm - 5:00 pm

**FEEL GOOD WALK - CHINGFORD**  
15 May 11:00 am - 12:00 pm

**FEEL GOOD WALK - LEYTON**  
16 May 11:00 am - 12:00 pm

**FEEL GOOD WALK - LEYTONSTONE**  
17 May 11:00 am - 12:00 pm

**DR BIKE**  
19 May 11:00 am - 2:00 pm

# Outcomes

- Local implementation plan data from LTDS
  - WF only outer London borough where combined walking and cycling share greater than private car
- Resident insight survey
  - Amount of residents describing themselves as occasional and frequent has doubled
- Rachel Aldred Study
  - Study comparing people living in MH boroughs with others
  - Suggests an increase in walking and cycling in MH boroughs esp. high dose areas
  - 41 minutes a week more than those living in comparable areas
  - Increase greater in walking (32 mins) than cycling (9 mins)
  - Getting towards WHO and MTS targets

# Outcomes

## Kings college air quality research group

- Residents will live 7 months longer
- 5 year old children will live an extra 6 weeks from air quality improvements
- Active school run could add another 3 weeks
- Air quality consultants investigation suggests houses exposed to more than max EU rec levels of NO<sub>2</sub> down from 58,000 in 2006 to 6,300 in 2017

## Department for Transport

- Most active outer London borough 40% of adults walk five times a week (only second to city of London)
- Highest of outer London boroughs for cycling five times a week
- Sixth highest in greater London (only inner London boroughs higher)



[jon@workwithbespoke.co.uk](mailto:jon@workwithbespoke.co.uk)

Twitter: [@bespokejon](https://twitter.com/bespokejon)