

Stockport Town Centre: Case Study

Better Town Centres by Bike or Foot

North West Active Travel Network

October 2018

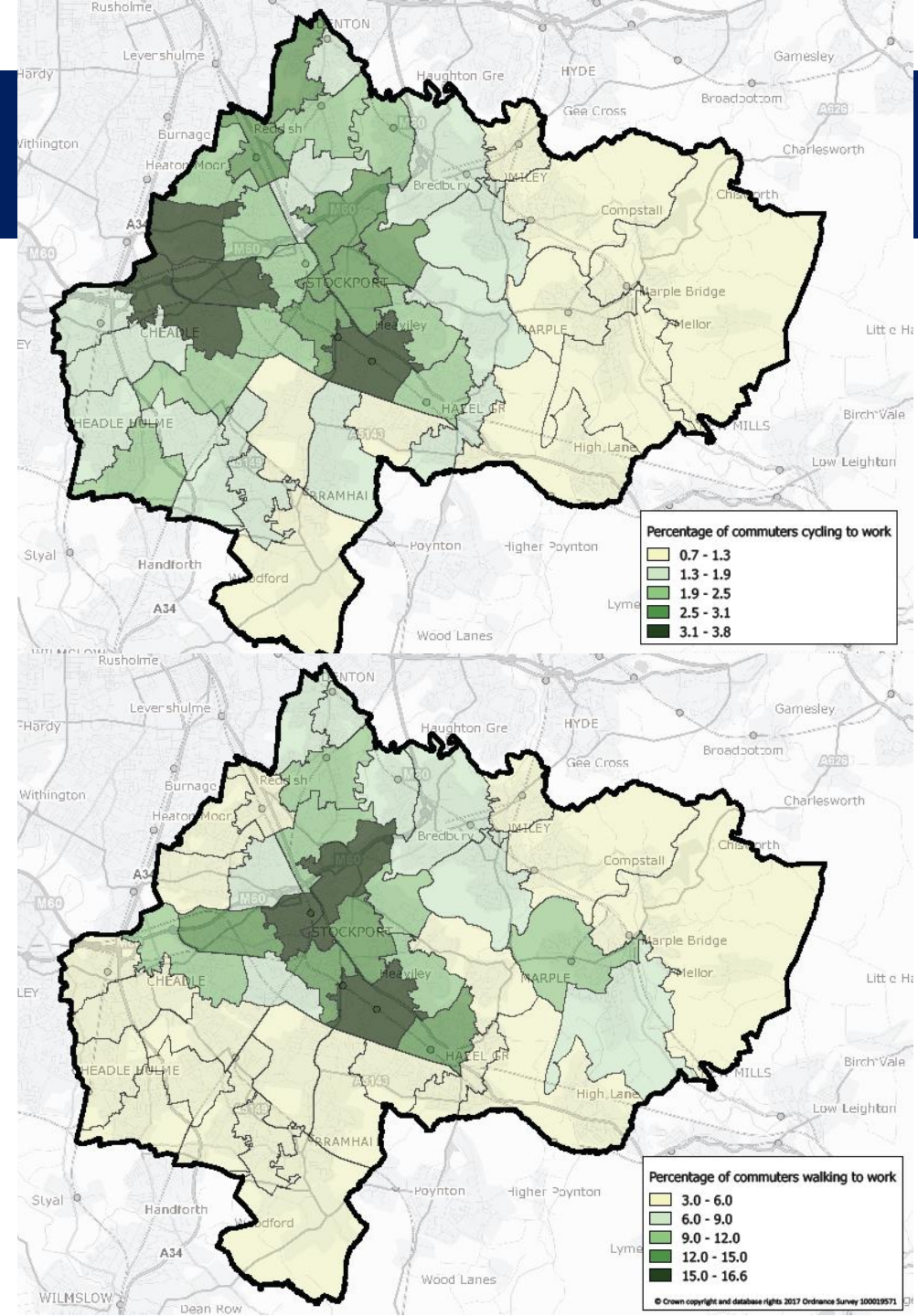
Stockport Town Centre. Change Here

- Radical and exciting £1billion programme of investment underway
- Transformation of the heart of Stockport into a dynamic and desirable place to work, live and visit – Whole Town Plan
- Successful delivery of key flagship schemes
 - Redrock
 - Stockport Exchange
- Pursuing first Mayoral Development Corporation in GM to deliver town centre living ambitions



Cycling and Walking: The Context

- 2.1% of travel to work journeys in Stockport are by bike (inline with GM average)
- 8.2% of travel to work journeys are by foot (below GM average of 10.5%)
- 57% of journeys less than 10km (and 15% less than 2km) so opportunity for more cycling and walking
- Beyond journeys to work, 86% of adults have walked in the last month and 13% have cycled.



Town Centre Access Package (TCAP)

- £73m investment
- Construction 2015 to early 2018
- 30 completed schemes
- Aiming to make it easier for people to access shops, services and leisure facilities whether cycling, on foot or as a motorist



Town Centre Access Package (TCAP)

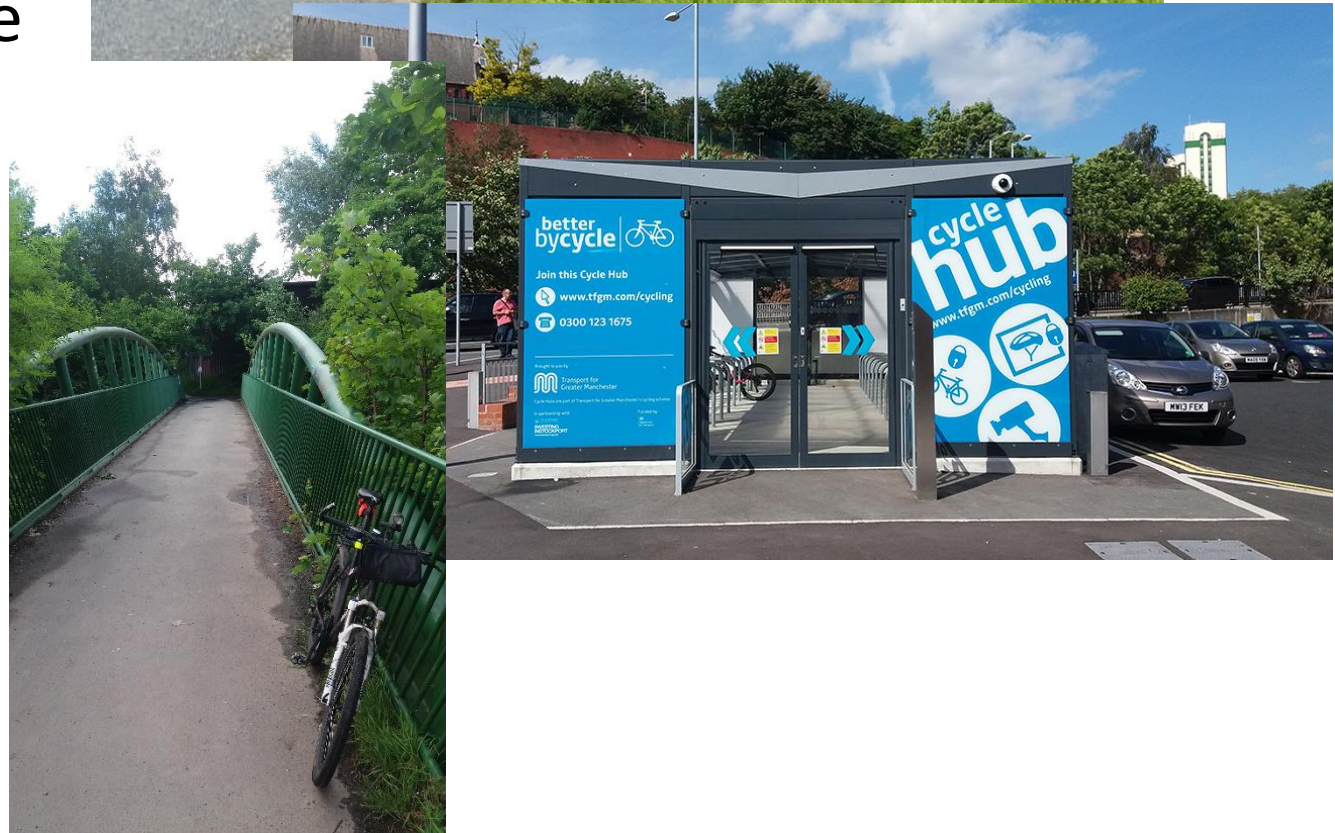
- St Mary's Way
 - Carriageway widening
 - Junction improvements
 - Shared footway / cycleway
 - New foot / cycle bridge

New and improved pedestrian and cycle routes into the town centre from the east including a new bridge over the River Goyt at Woodbank Park



Other Projects

- Lancashire Hill cycle link – 2 way cycle lane addressing M60 severance
- Geoff Funnell Bridge and Aurora cycle path
- Cycle Hub at Tiviot Dale
- TPT upgrades – Kings Reach
- Dark Lane resurfacing – complete mostly off-road route into the Town Centre from Marple and Romiley



Wider Efforts to Encourage Cycling and Walking

- Highways Investment Programme - £100m boroughwide investment to improve footway and road surfacing
- LED Street Lighting Upgrade – 33,000 street lights to LED over the next 5 years



Next on the agenda

- Consult on a Stockport Cycling and Walking Strategy
- Ongoing input to GM Made to Move proposals
- Review of opportunities for bike share schemes (as part of GM approach)
- Focus on key regeneration projects and integrating them with the rest of the town centre
- Solution for the A6 – Streets for All



Sue Stevenson
Head of Highways and Transportation
sue.stevenson@stockport.gov.uk